

STAFF & CUSTOMER MONITORING SYSTEM

SMART FACIAL RECOGNITION, BODY TEMPERATURE AND ACCESS CONTROL LCD DISPLAY



PRODUCT OVERVIEW

Designed as a high-tech access control measure, our kiosks are ideal for use at entrances to healthcare facilities, supermarkets and retail shops, factories, transport hubs, office buildings, schools and universities and any other areas open to the general public to help prevent the spread of viruses and maintain a healthy environment.

FEATURES AT A GLANCE

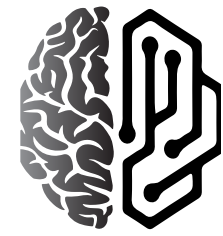
- + HIGH PERFORMANCE CPU
- + FACIAL RECOGNITION (EVEN WITH MASKS)
- + INFRARED THERMOGRAPHY
- + MULTIPLE INSTALLATION OPTIONS



“ HELP PREVENT THE SPREAD OF VIRUSES AND MAINTAIN A HEALTHY ENVIRONMENT ”

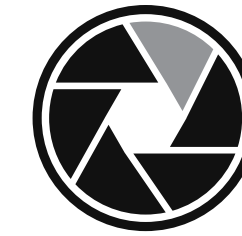


SMART FACIAL RECOGNITION



+ SMARTER THAN SMART

It can be used to allow entry to pre-vetted individuals or control access via temperature readings for the general public. Set your own parameters for temperature readings and the device will either show a successful message or a warning traffic light style LED lights.



+ DYNAMIC CAMERA

The binocular wide dynamic camera (200W pixel) has a focus distance of between 50 and 150cm, features automatic white balance and comes equipped with an LED and infrared dual photo flood light.



+ EXTREMELY ACCURATE

The 1:1 comparison recognition rate is more than 99.7%. The 1: N comparison recognition rate is more than 96.7% at a 0.1% misrecognition rate, and the live detection accuracy rate is 98.3% at a 1% misrejection rate.



+ SWIFT RECOGNITION

Facial recognition pass speed is approximately 1 second.



+ MASK FUNCTIONALITY

Supports recognition and comparison of faces even with surgical masks on.



+ LARGE FACIAL DATABASE

Database capacity for 30,000 faces.

COMMERCIAL-GRADE HARDWARE



+ 8" LCD DISPLAY

8-Inch IPS full-view display (IPS) panels boast superior colour and viewing angles.



+ STABLE & DURABLE

Commercial-grade materials & durable construction deliver a waterproof & dust-proof design.



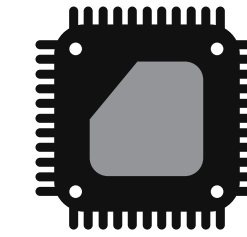
+ BUILT-IN SPEAKERS

Enable verbal alerts and alarms, including warnings for abnormal temperatures.



+ TEMP. DETECTION

Accurate body temperature readings that have only a marginal measurement error of approximately 0.1 degrees.



+ HIGH-TECH PARTS

Industrial-grade, binocular wide dynamic camera, RK3288 Quad Core / RK3399 Six Core CPU

INSTALLATION

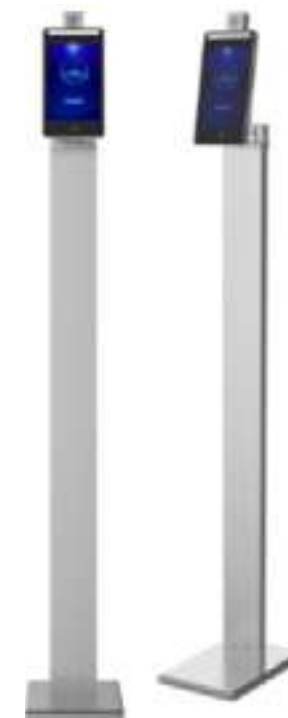
DEVICE MOUNTING OPTIONS:



+ BARRIER GATE



+ WALL MOUNT



+ STAND MOUNT



+ DESK MOUNT

INFORMATION REQUIRED TO QUOTE

+ NUMBER OF SITES?

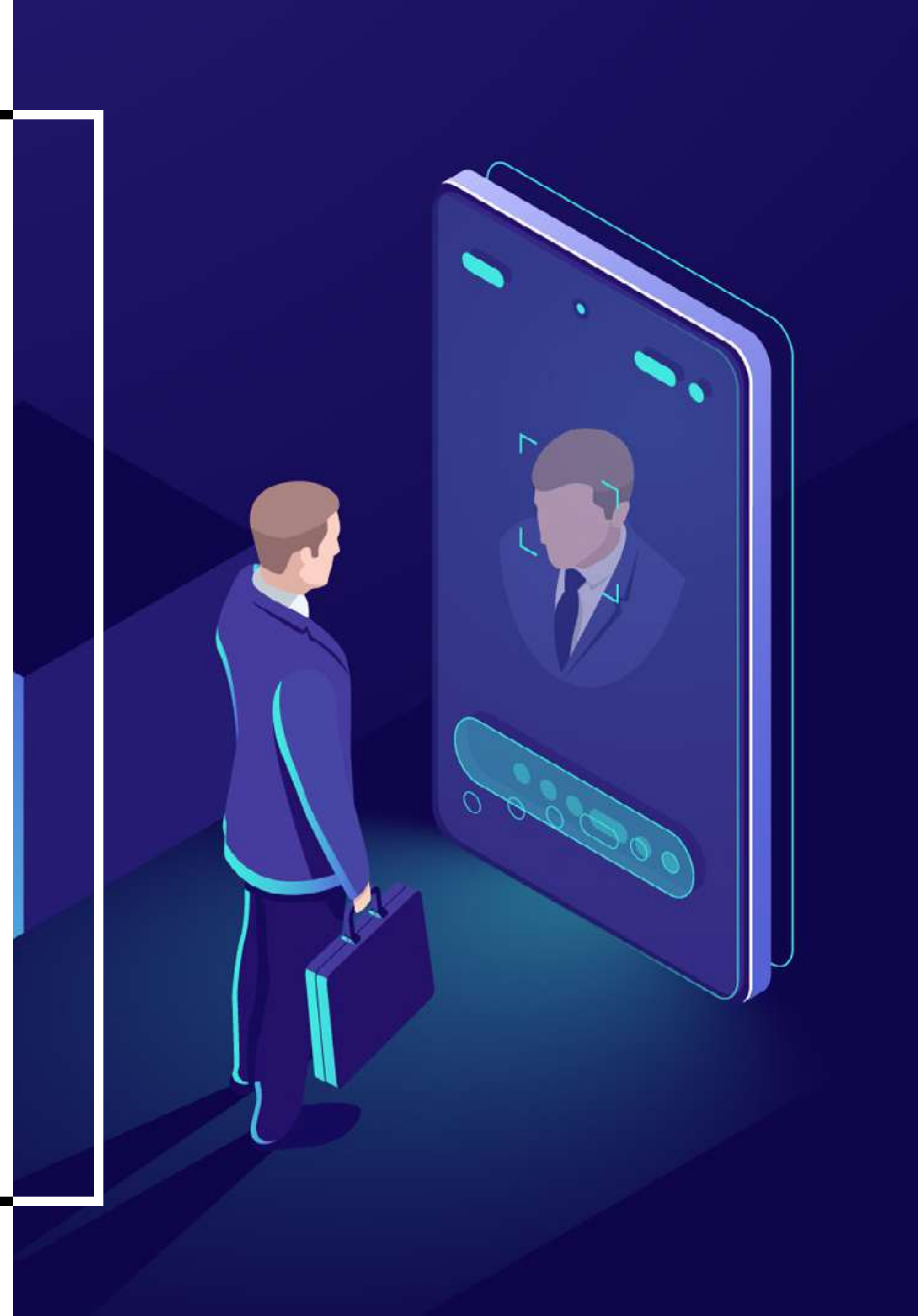
+ NUMBER OF DEVICES REQUIRED?

+ PREFERRED INSTALLATION/MOUNTING OPTION?

Wall, stand, desk/counter or barrier gate

**+ CONNECTIVITY PROVIDED BY THE CUSTOMER OR
IS A ROUTER REQUIRED?**

Please indicate the line speed and general service details if providing your own connectivity solution.



FAQs



+ CAN IT FUNCTION OVER A NETWORK?

Yes, the module supports both Ethernet and Wireless(WiFi).

+ CAN I USE MY EXISTING INTERNET?

Yes but the solution will need to be approved by BBM IT (as per the minimum specs and line speed) and either an active network point or in the case of WiFi, a separate SSID will be required.

+ DOES IT SUPPORT AUDIO?

Yes, the device has a built-in 2.5W/4R speaker.

+ CAN IT INITIATE OPENING OF BARRIER GATES OR AUTOMATIC DOORS ONCE ACCESS IS GRANTED?

Yes, a door open relay signal output is included with each device.

+ CAN THE SOFTWARE BE UPDATED/UPGRADED?

Yes, remote device upgrade is supported provided there is a network connection.

+ HOW CLOSE DO I NEED TO BE TO THE DEVICE FOR IT TO READ MY BODY TEMPERATURE?

Within 1 meter.

+ WHAT ARE THE WARRANTY PERIODS FOR THE HARDWARE REQUIRED?

Warranty periods are listed for each item of hardware on official BBM quotes.